



pearson
ferrier®



11 INMAN STREET
Bury, BL9 0TP
£250,000

11 INMAN STREET

Property at a glance

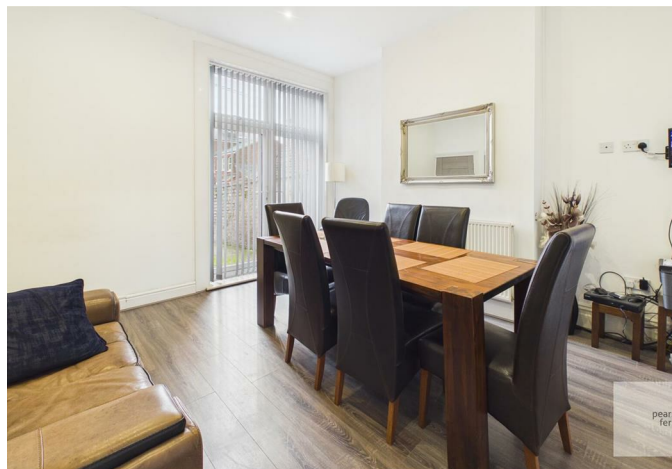
- BAY FRONTED TERRACE
- THREE BEDROOMS
- TWO RECEPTION ROOMS
- WALKING DISTANCE TO BURY CENTRE & THE METROLINK
- GARAGE TO REAR
- CLOSE TO LOCAL SCHOOLS & COLLEGES

Deceptively spacious three bedroom, two reception room bay fronted terrace, located in a convention position within walking distance to Bury town centre and the Metrolink network with local schools and colleges being close by. The property is ideal for a growing family and briefly comprise of: Vestibule, lounge, separate sitting/dining room and good size kitchen. To the first floor is a landing with built in storage, three bedrooms (Two double & with fitted wardrobes) and family shoer room. The property benefits from garden to the front, enclosed rear yard and attached garage providing off road parking.

Tenure - Leasehold - 999 years from 24 December 1895

Council Tax Band - B

EPC - tbc







Bury Office
 435/7 Walmersley Road, Bury, Lancashire, BL9 5EU
 Telephone: 0161 764 4440
 Fax: #
 Email: bury@pearsonferrier.co.uk

www.pearsonferrier.co.uk



All statements contained in these particulars are for indicative purposes only and are made without responsibility on the part of Pearson Ferrier and the vendors of this property and are not to be relied on as statements or representations of fact. Potential purchasers should satisfy themselves by inspection or otherwise as to the accuracy of such details contained in these particulars.